

TECHNICAL DATASHEET

EWN 9001

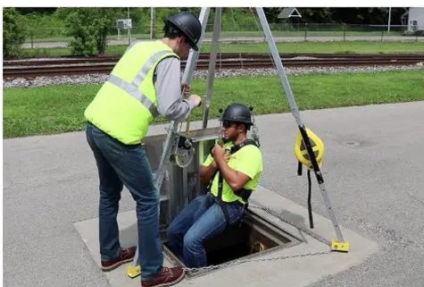
Galvanized Steel Winch

Eyevex[®]
Our vision. Your safety

Specifications:

- Maximum Lifting Load Capacity (as per EN 1496) : 135kgs
- Steel screw locking karabiner
- Galvanized steel wire: 20mtrs
- Can be mounted on tripods with the help of their fastener
- Winch housing Big: Carbon steel ; Finish: Yellow Zinc
- Brass Bush Big: Brass; Finish: Yellow Zinc
- Gear Set: Carbon Steel; Finish: Yellow Zinc
- Ø4.5mm Galvanized Wire Rope 7x19: Galvanized Steel Wire Rope
Finish: Galvanized
- Plastic Handle: Nylon; Finish: Yellow Zinc
- Handle Spring: Yellow Zinc; Finish: Yellow Zinc
- Winch Cover: Nylon 6.30% Glass filed
- Winch Assembly: High Tensile; Finish: Yellow Zinc

Sample Application:



Made in India

Mfd. under License from:
Eyevex Safety U.S.A., Inc.



1013 Centre Road, Suite 403-B, Wilmington, DE 19805, U.S.A.

www.eyevexsafety.com